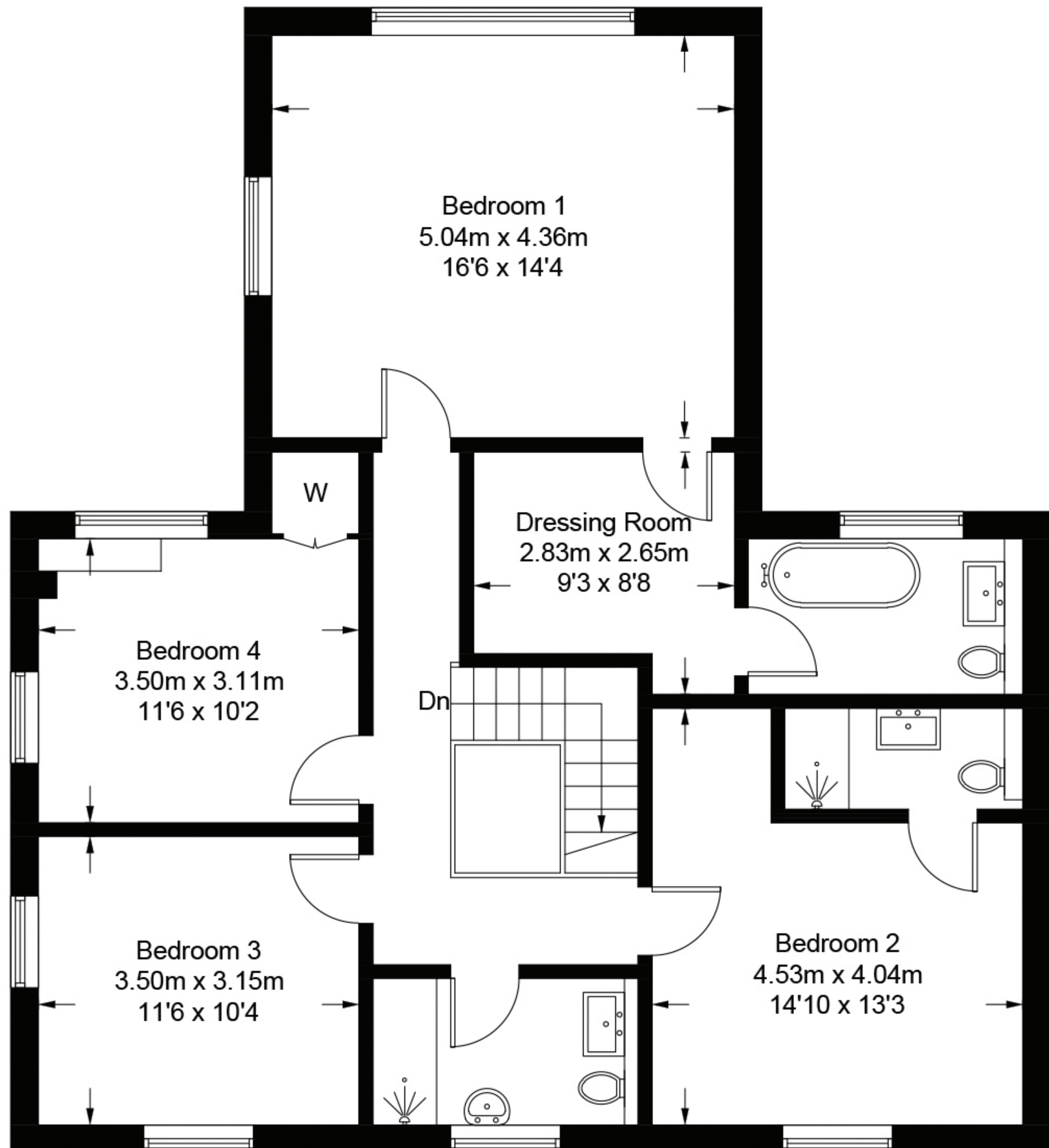
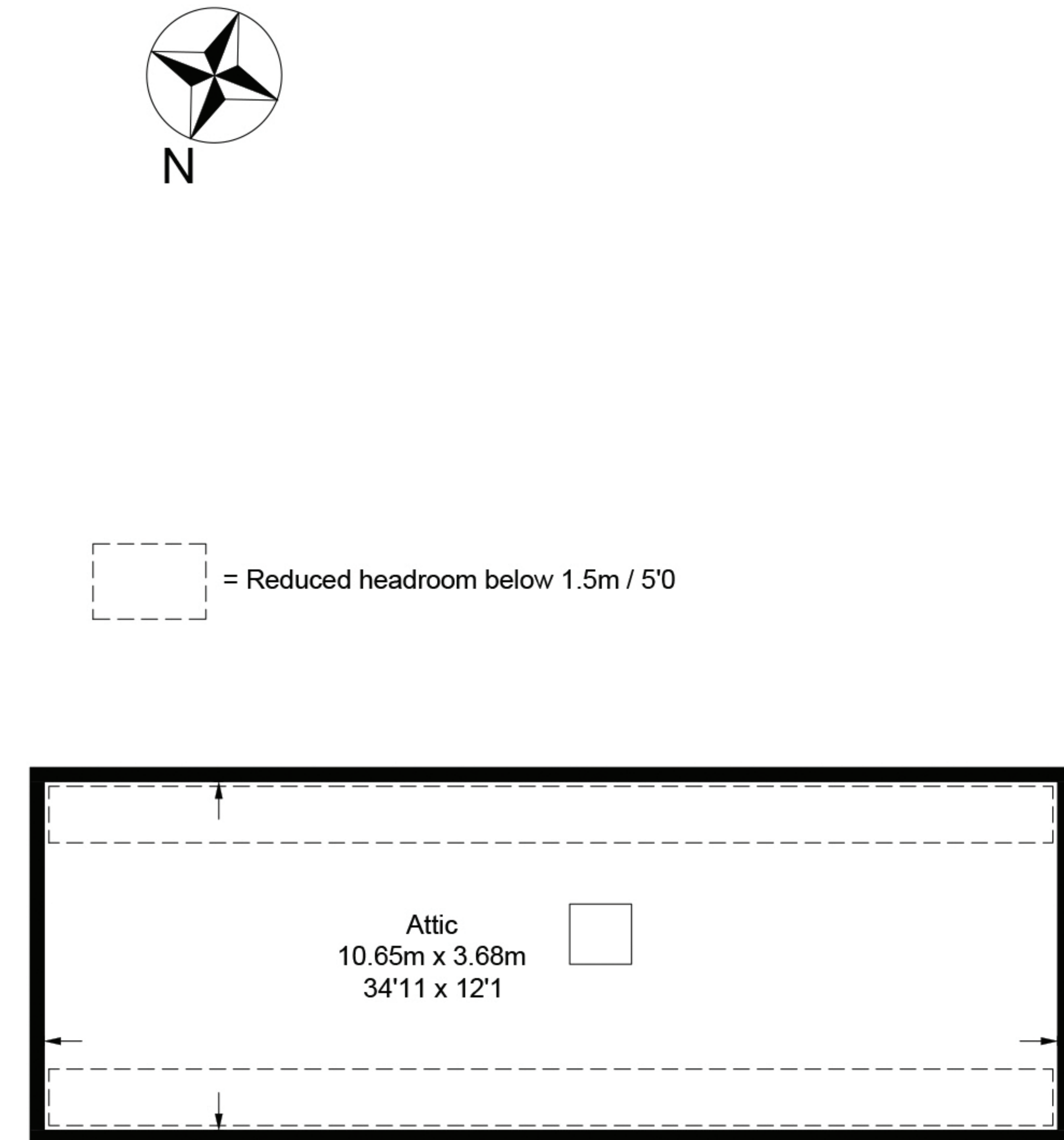


Ground Floor
120.4 sq m / 1296 sq ft



First Floor
96.6 sq m / 1040 sq ft



Attic
39.8 sq m / 428 sq ft

Approximate Gross Internal Area = 217.0 sq m / 2336 sq ft
 Attic = 39.8 sq m / 428 sq ft
 Total = 256.8 sq m / 2764 sq ft

Illustration for identification purposes only, measurements are approximate, not to scale. (ID1215156)